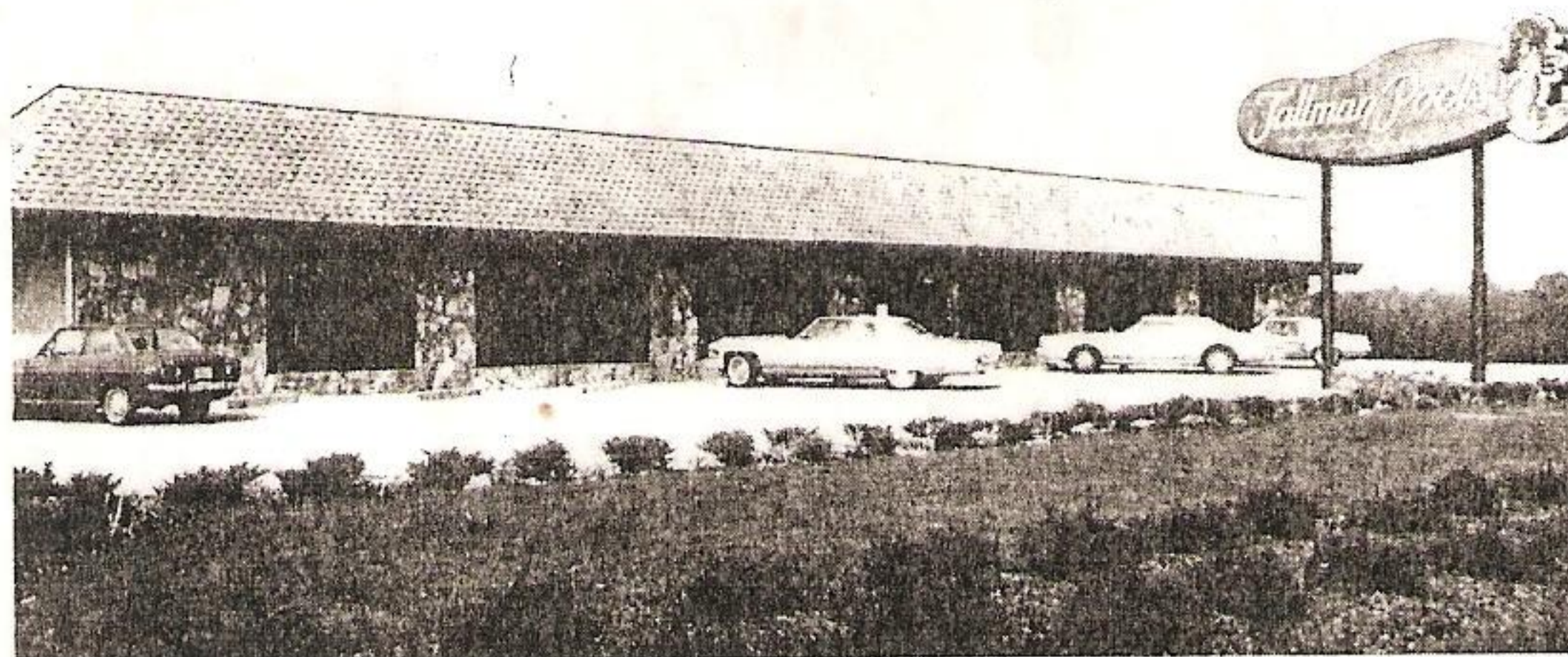




CUTTING ribbon on new Tallman facility is Jonesboro Mayor Hugh Dickson, flanked by Al and Janet Tallman.



EXTERIOR view of part of the 70,000 sq. ft. complex.



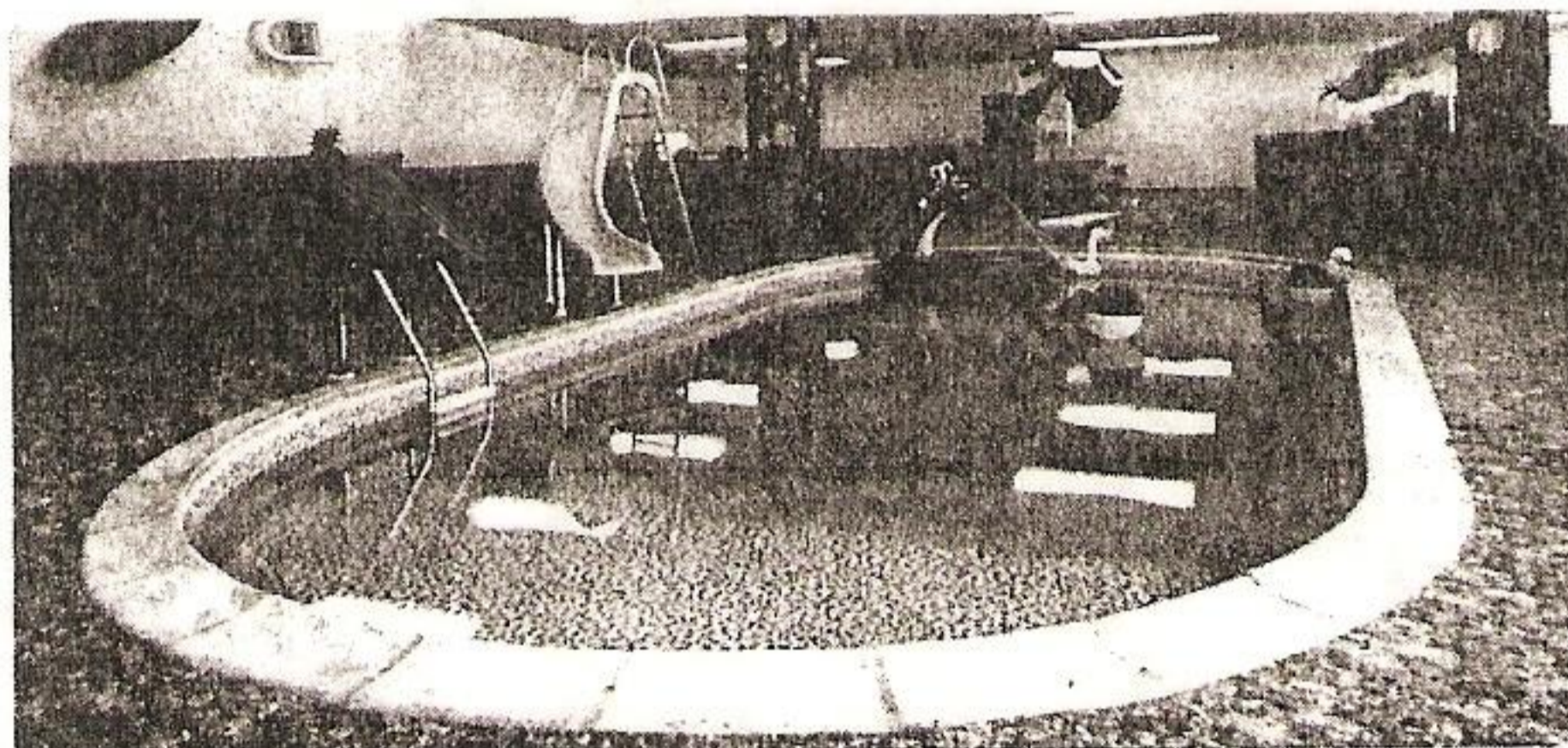
AT LEFT are (from left) Marla Fisher, bookkeeper; Mary Lewis, shipping clerk; Janet Tallman, executive president; Margie Richards, customer service; and Wyelda Watkins, wholesale marketing rep.



FLORAL gift is admired by, from left, Joe Osborne, wholesale manager; Mike Schriver, retail manager; and Jan and Al Tallman.



AT LEFT, celebrating with champagne are, from left, Osborne, Tallman, Schriver and Randy Richards of the construction department.



SHOWROOM — One of four indoor in-ground pool displays.

Tallman Pools Expands with New 10-Acre Complex

By Robert H. Brown

ATLANTA, Ga. — Tallman Pools officially opened its new southern wholesale, manufacturing and retail complex in Atlanta, with local officials attending the formal ribbon-cutting ceremonies.

Located at 8900 South Expressway, Jonesboro, on the outskirts of Atlanta, the new facility covers 10 acres and the entire complex covers more than 70,000 sq. ft. of floor space.

The complex will be used to manufacture equipment which will be shipped to all 50 states from Atlanta, according to Al Tallman, who came to Atlanta in 1973 to set up an outlet.

The complex actually consists of two buildings. One is the original building used when the operation was first established here. This building will be used to produce stone coping, Tallman said.

Steel and vinyl liners will be produced here, he said.

The complex also features an indoor display containing four indoor in-ground pools. Included in the display is a model built above the floor to show the actual construction of the pool.

This interior display room covers some 15,000 sq. ft. and could very well be, according to Tallman, the largest indoor display room in the country.

It is furnished with wall-to-wall carpeting. The front of the building is equipped with one-way glass.

Offices are provided just off the display room, where executives will have private facilities to conduct the firm's business.

The location was chosen, according to Tallman, because of transportation facilities from Atlanta. It is located conveniently near the Atlanta Hartsfield International Airport, providing easy access to out-of-town visitors.

And because the facility is just off Interstate 75, freight truck lines will be able to reach the center with ease.

Tallman now has two outlets in Florida, Tennessee and New York and four in Georgia.

Plans are underway for expansion into other areas, with dealers throughout the country, Tallman said.

The future plans also call for the installation of a regional facility at Houston, Texas, he said.

The company is employing 114 people in

the complex here and of this number 56 are construction workers.

The Atlanta retail operation, also centered in the building, and under the management of Mike Schriver, will operate in a radius of 100 miles of Atlanta.

The wholesale division is being directed by Joe Osborne with Wyelda Watkins as the wholesale representative.



AL TALLMAN, happy about the new addition and growth of his business.